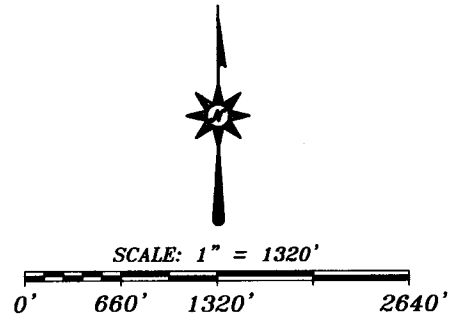
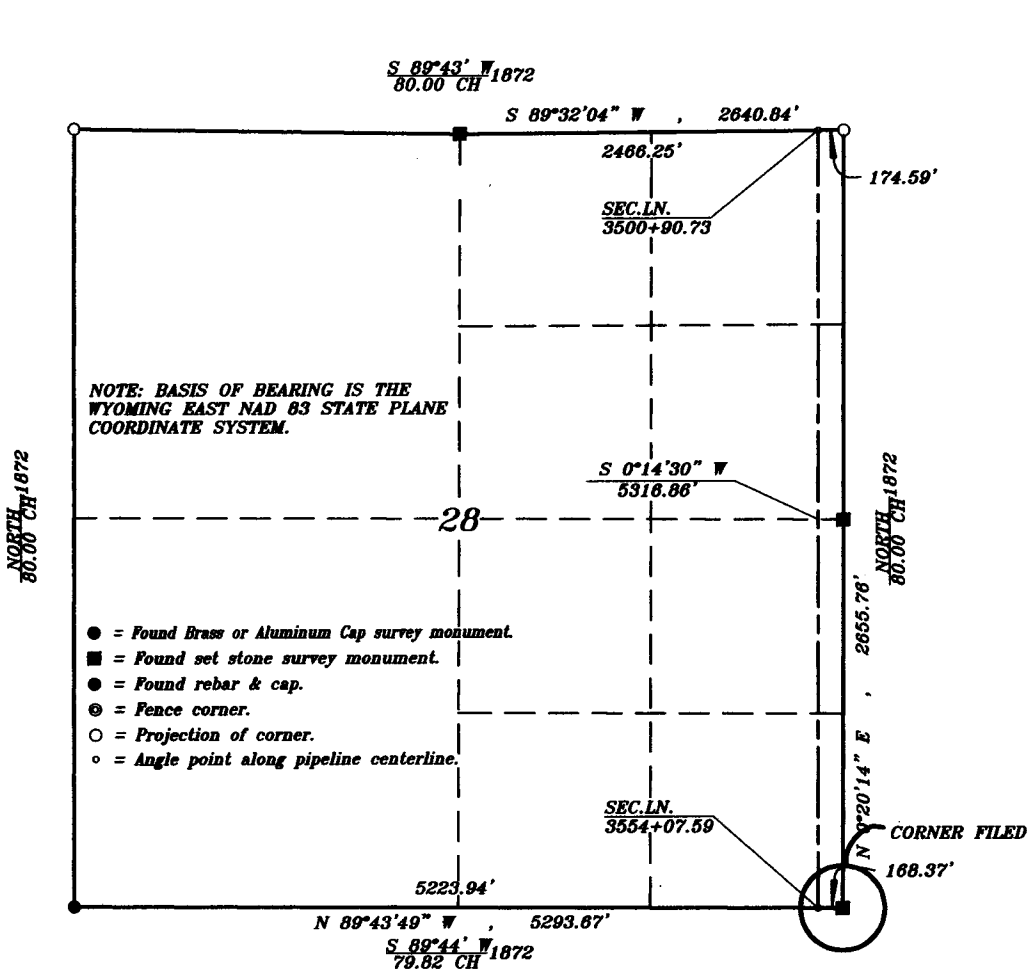


State of Wyoming Corner Record

(In compliance with the CORNER PERPETUATION AND FILING ACT, Wyoming Statutes, 1977, Section 36-11-101, et. seq., and the Rules and Regulations of the Board of Registration for Professional Engineers and Professional Land Surveyors.

Record of original survey and citation of source of historical information (if corner is lost or obliterated). Description of corner monumentation evidence found and/or monument and accessories established to perpetuate the location of this corner. Sketch of relative location of monument, accessories and reference points with course and distance to adjacent corner(s) (if determined in this survey). Method and rationale for reestablishment of lost or obliterated corner.



FOUND:
 GRANITE STONE OUT OF GROUND AT FENCE CORNER, MARKED ~~W/~~ 1 NOTCH ON SOUTH SIDE & 3 NOTCHES ON EAST EDGE.

SET:
 NOTHING.

GLO:
 N/A

- = Found Brass or Aluminum Cap survey monument.
- = Found set stone survey monument.
- = Found rebar & cap.
- ⊙ = Fence corner.
- = Projection of corner.
- = Angle point along pipeline centerline.

Date of Field Work: MONTH OF JULY OF 2006

Office Reference: Job No. 50-06

CROSS INDEX DIAGRAM T 16 N, R 66 W

1	2	3	4	5	6	7	8	9	10	11	12	13	14	15	16	17	18	19	20	21	22	23	24	25	
A																									A
B																									B
C	6																								C
D		5																							D
E			4																						E
F				3																					F
G					2																				G
H						1																			H
I																									I
J																									J
K																									K
L	18																								L
M		17																							M
N			16																						N
O				15																					O
P					14																				P
Q						13																			Q
R																									R
S																									S
T																									T
U																									U
V																									V
W																									W
X																									X
Y																									Y
Z																									Z
	1	2	3	4	5	6	7	8	9	10	11	12	13	14	15	16	17	18	19	20	21	22	23	24	25

Firm/Agency, Address
 Siek Surveying Service
 P.O. Box 1765
 Casper, Wyoming, 82602
 (307)266-6829

This corner record was prepared by me or under my direction and supervision.

SEAL & SIGNATURE



(LARAMIE COUNTY)

Corner Name: SE Section 28, T 16 N, R 66 W, 6th P.M. Cross-Index No. V-13
 SBRPEPLS/PLSW:March 1994